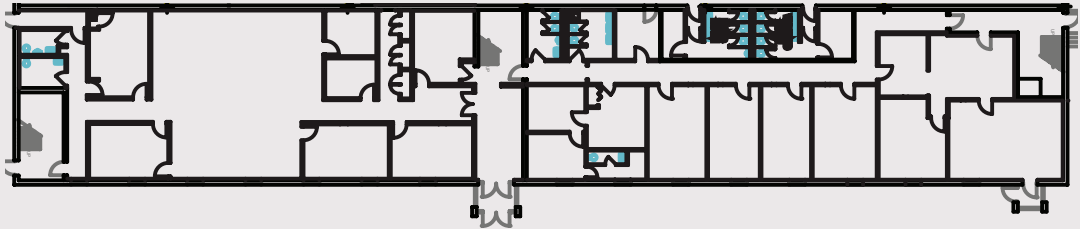


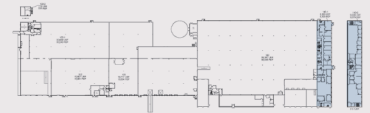
# 700 EVELYN AVE

UNIT A | FOR LEASE

1ST FLOOR



2ND FLOOR



**UNIT A** | 18,305 SF AVAILABLE

### Immediate Availability

18,305 SF Total

- 1st Floor: 8,926 SF
- 2nd Floor: 9,379 SF

### Space Features

- End Cap Fully Conditioned Office Space
- Column Spacing: 33' x 40'
- Parking Ratio 1.0/1,000

### Location Features

700 Evelyn Avenue is located at the northern end of the Baltimore-Washington Corridor, adjacent to the Baltimore Beltway (I-695) and Baltimore-Washington Parkway (MD Route 295), just 2 miles from BWI Airport.



*Minkoff*

**Mike Maites | Director of Leasing**  
mmaites@Minkoffdev.com

**240.912.0200 | minkoffdev.com**

REAL ESTATE  
PERSONAL PERSPECTIVE